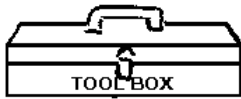


### PARTS LIST

Description	Qty.
Carbon fiber dash panel cover	1Set
Alcohol Wipe	1



Hand Held Hair Dryer, 1500 Watt  
Paper Towels Soft Cloth  
Tweezers

### PREPARATION

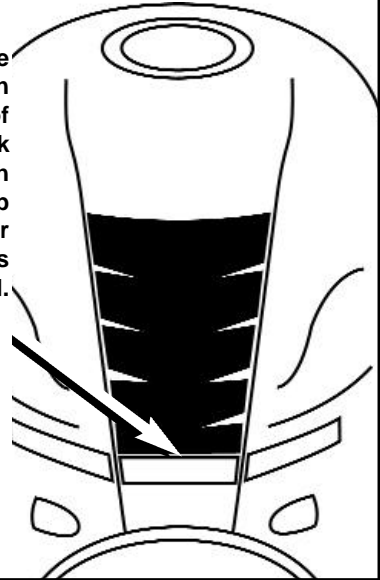
1. Remove the seat.
2. Thoroughly clean the fuel tank cover surface from below the front of the seat and up ten inches. First wash the fuel tank cover area, as you would normally clean the motorcycle.
3. After drying with the paper towels, clean again with the Alcohol Wipes. Do not apply wax or polish to the area cleaned.

### INSTALLATION

1. Warm the fuel tank cover center panel to about 100° F (37° C) (Hair Dryer).
2. Warm the Carbon Fiber Tank Protector to 100° F (37° C) (Hair Dryer).
3. When everything is warm, carefully remove the masking from the adhesive side of the Carbon Fiber Tank Protector (Tweezers).
4. Refer to the appropriate illustration for your motorcycle and to position the Carbon Fiber Tank Protector on the fuel tank.
5. If it is necessary to reposition any piece, warm the piece and slowly peel it from the surface. Be careful not to stretch or over bend the piece.
6. Once the pieces are correctly positioned, firmly, but carefully, press the Carbon Fiber Tank Protector onto the warm fuel tank center cover panel.

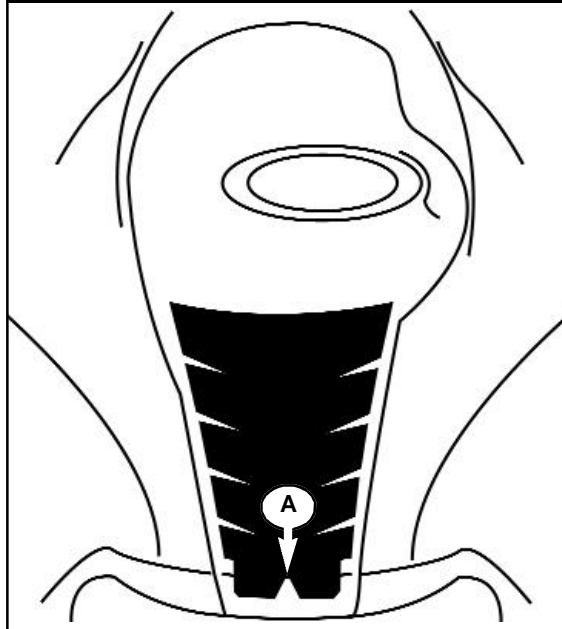
## K1200 RS

Remove the seat. Align lower edge of Z8500 Tank Protector with rubber strip accessible after the seat is removed.



## R1100 S

Align point "A" where edge of tank folds downward. Center carbon fiber tank protector evenly left to right on center panel of tank.



7. Once properly positioned, and still warm, carefully use the Soft Cloth to rub the Carbon Fiber Tank Protector onto the fuel tank cover center panel until it is completely adhered.

8. After 24 hours, the adhesive on the Carbon Fiber Tank Protector will have set completely and the Carbon Fiber Tank Protector will be permanently installed.

### **Trouble Shooting**

If, for some reason installation does not go smoothly, heat the tank, as instructed in Step 1. under the area that pulled up. Use a small amount of MEK (Methyl Ethyl Keytone, available through hardware stores such as Ace® hardware) to re-activate the adhesive. Carefully press area with a soft cloth.

### **CAUTION**

1. Do not use heat guns or open flame to warm the pieces or the motorcycle, they produce too much heat and may create a fire hazard.
2. Warming temperature is critical for the best performance and adhesion. Installing a warm piece onto a cold surface is not recommended.
3. **Cleaning is critical.** Be sure to remove all wax, cleaners, and protectants (Armor-All). These can foul the adhesive causing it to fail.

### **MAINTENANCE**

Clean and polish the carbon fiber dash panel with Turtle Wax® vinyl fabric upholstery cleaner and protector. Spray wax or cleaner on cloth and wipe the carbon fiber covers. Never apply waxes or cleaners directly to the carbon fiber covers.

