

TOOLS REQUIRED:
Torx Wrench, T25

NOTE: Right and Left side of Motorcycle is determined while sitting on the bike.

PARTS LIST

| Index | Description | Qty. |
|-------|----------------------|------|
| 1 | Fairing Lower, Right | 1 |
| 2 | Fairing Lower, Left | 1 |

LOWER DEFLECTOR INSTALLATION

Note: retain all fasteners, as they will be reused.

1. Remove the two fasteners holding the original fairing lowers (Torx Wrench, T25.)
2. Position the Z-Technik Fairing Lower and start the screws (Torx Wrench, T25.) Figure 1.
3. Tighten the screws firmly (Torx Wrench, T25.)
4. Repeat on other side. Figure 2.

MAINTENANCE

Cleaning: Wash with a clean soft cloth, plenty of warm water and, if necessary, a non-abrasive soap such as dishwashing liquid. Flannel or soft chamois make good cleaning cloths.

Paint, glue residue removal: Moisten cotton with a small amount of Naphtha or Turpentine **followed by a wash as above.** Apply a quality plastic cleaner, such as McGuir's Mirror-Glaze MG-17 to the lowers. This will leave a protective coating on the lower making future cleanings easier. Do not use rain protective products on the plastic. The solvent action of the alcohol in these products will destroy the material. Do not allow brake fluid, alcohol, or strong solvents to contact the fairing lowers.

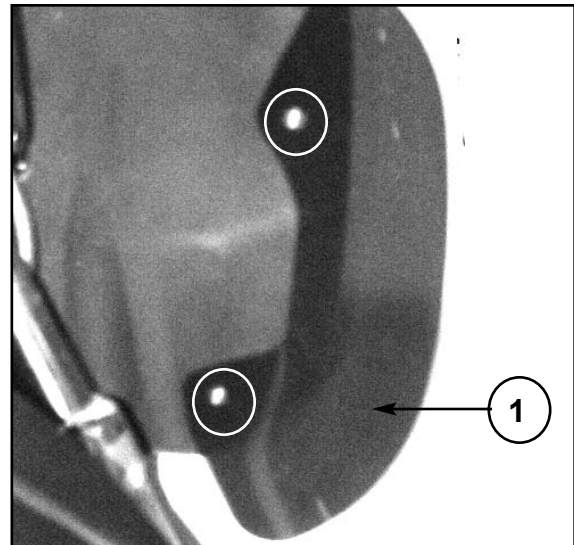


Figure 1



Figure 2