

Before proceeding with the installation carefully read the instructions and consider whether one possesses the necessary technical skills and workshop tools to complete the installation properly. Otherwise, any BMW Motorcycle Retailer will be glad to install this accessory.

Attention



Special notes and cautionary measures which can prevent damage to the accessory or motorcycle.

Note:



Tips for facilitation of operation, control and adjustment, as well as maintenance work.

PARTS LIST

Index	Description	Part No.	Qty.
1	Pad	70-730052-000	2
2	Stay, Left	70-740012-000	1
3	Stay, Right	70-740013-000	1
4	Arm Rest, Left	70-740014-000	1
5	Arm Rest, Right	70-740015-000	1

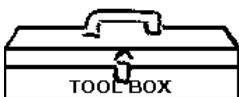
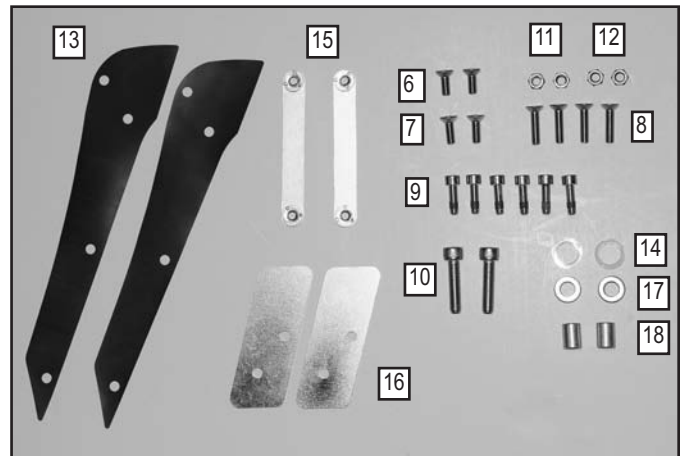


These Passenger Arm Rests fit to the left and right sides of the rear trunk lid of the K1200LT. Use the enclosed template for a drilling guide.

Left and Right side of motorcycle are determined while seated on the bike.

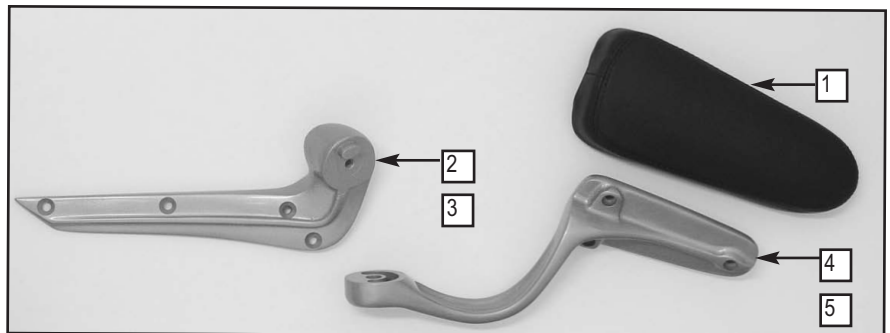
BAG 409 A

6	Screw, Flat, M6 x 16 Stainless	51-514217-000	2
7	Screw, Flat, M6 x 18 Stainless	51-514218-000	2
8	Screw, Flat, M6 x 25 Stainless	51-514227-000	4
9	Screw, Hex, M6-1.0 x 20	51-515324-000	6
10	Screw, Hex, M8 x 35	51-515737-000	2
11	Nut Hex M6-1.0 JAM	42-423044-000	2
12	Nut Hex M6-1.0 w/Nylok Patch	42-423040-000	2
13	Gasket	75-763202-000	2
14	Washer, Flat Nylon	49-490211-000	2
15	Support Brace	37-370748-000	2
16	Nut Plate	37-370749-000	2
17	Washer, Flat Stainless	49-490301-000	2
18	Bushing, L .630"	49-495505-000	2



Tools Needed:

Flat Blade Screwdriver
Scissors (for template)
Cellophane Tape
Hand Drill with 1/4" (6.5mm) Drill Bit
6mm, 5mm and 4 mm Hex Key Wrench



PREPARATION

1. Place the motorcycle securely on its center stand or work stand.
2. Remove thumbscrew on left side and release tether. Slowly allow to retract.
3. Use a screwdriver at the latch mechanism to release the inner shell of the trunk lid. Use screwdriver blade to lightly pry tab away from latch (to rear of bike) while gently lifting plastic trim rim on **each side**. Front edge is attached to trunk with velcro. **Figure 1. (Screw driver)**
4. Remove the inner shell. **Figure 2.**



Figure 1

DRILLING INSTRUCTIONS

5. Locate the Drill Template (**form No.10-117754-000 and 10-117755-000**) and carefully follow the drilling Instructions that follow. Do not attempt to drill the holes without a Drill Template.

- 5.1. Cut out templates along solid outer line. **Figure 3.**



Figure 2

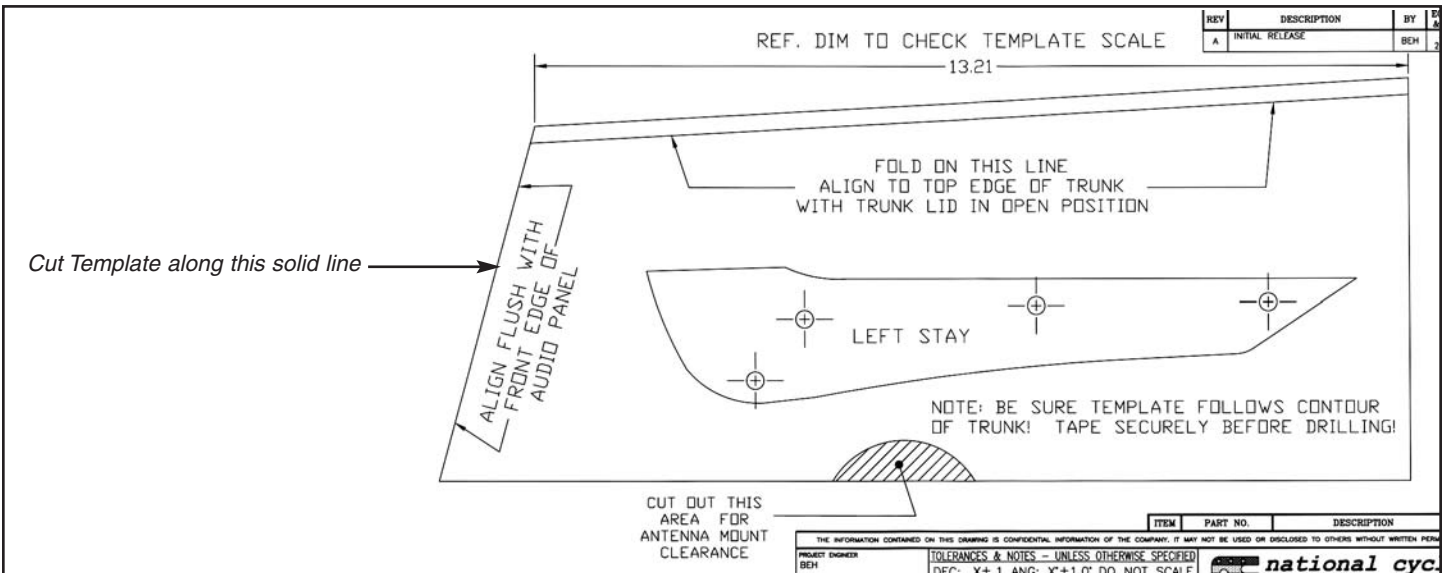


Figure 3

5.2. Open trunk lid. Tape Left Template at top as in instruction on template. **Figure 4.**

5.3. Smooth the Template to follow the contours and tape securely. **Figure 5.**

5.4. At this time you can see where the Stay will be located.

6. Drill 1/4" (6.5mm) holes normal to the surface at the 4 positions shown on template. **Figure 6.**

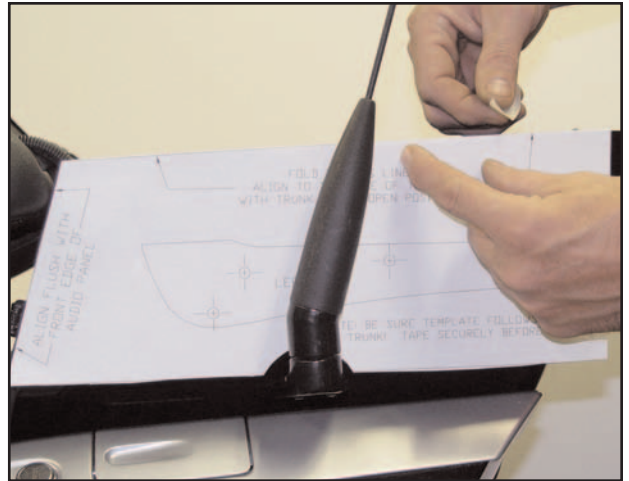


Figure 4

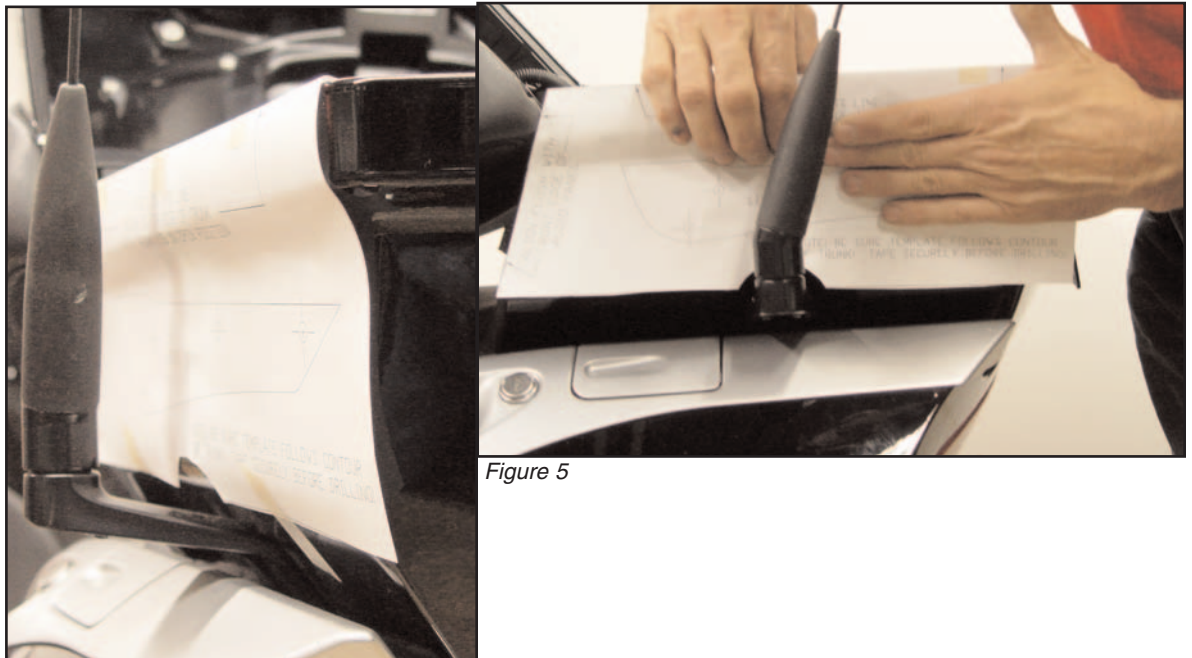


Figure 5



Figure 6

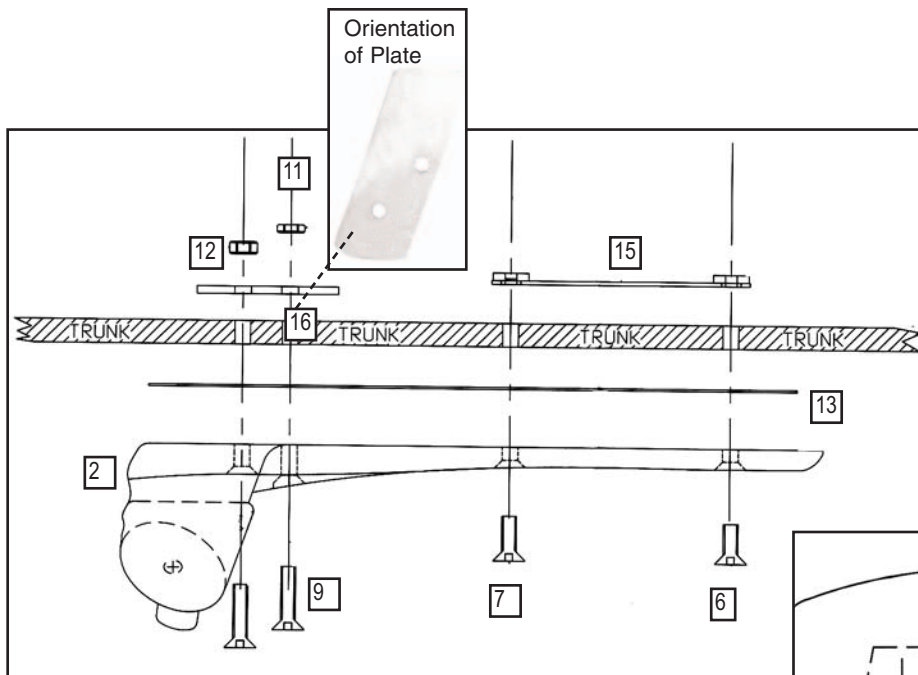


Figure 7

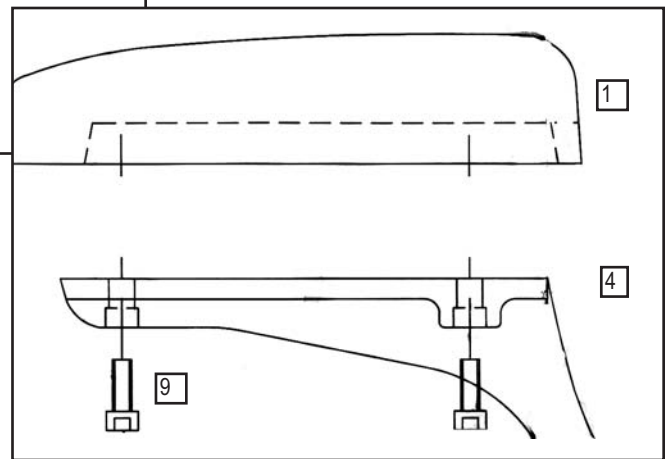


Figure 8

Nylon Washer needs to stay on bushing while tightening.

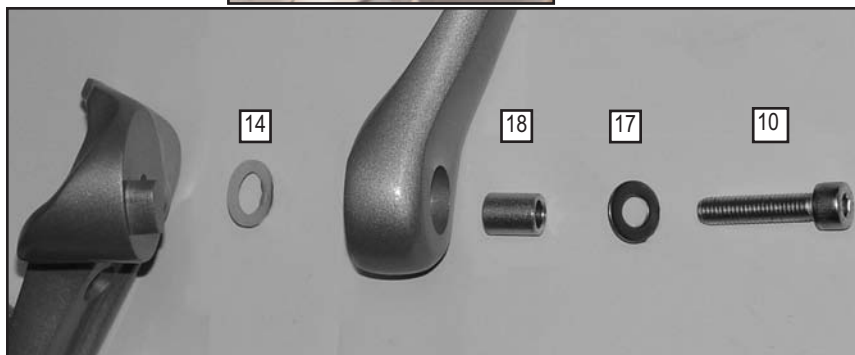
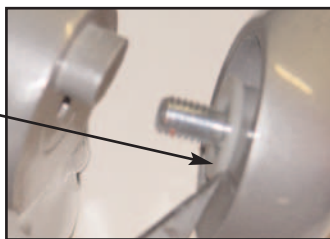



Figure 9

INSTALLATION OF STAY TO TRUNK

7. Install the Left Stay to the left side of the trunk as illustrated. **Fasteners 6, 7 and 9 are different lengths. Refer to figure 7 for correct placement. (4mm Hex Wrench)**
 8. Assemble the Pad to the Arm Rest as illustrated. **Figure 8 (5mm Hex Wrench)**
 9. Assemble the Arm Rest Assembly to the Stay. **Figure 9 (6mm Hex Wrench)**
-  **Be careful that the Washer remains on the Bushing To maintain a flush fit of the arm to the stay.**
10. Repeat steps 8-12 for opposite side of motorcycle.
 11. Tighten all fasteners to 7ft.lbs / 84 in.lbs (10Nm).